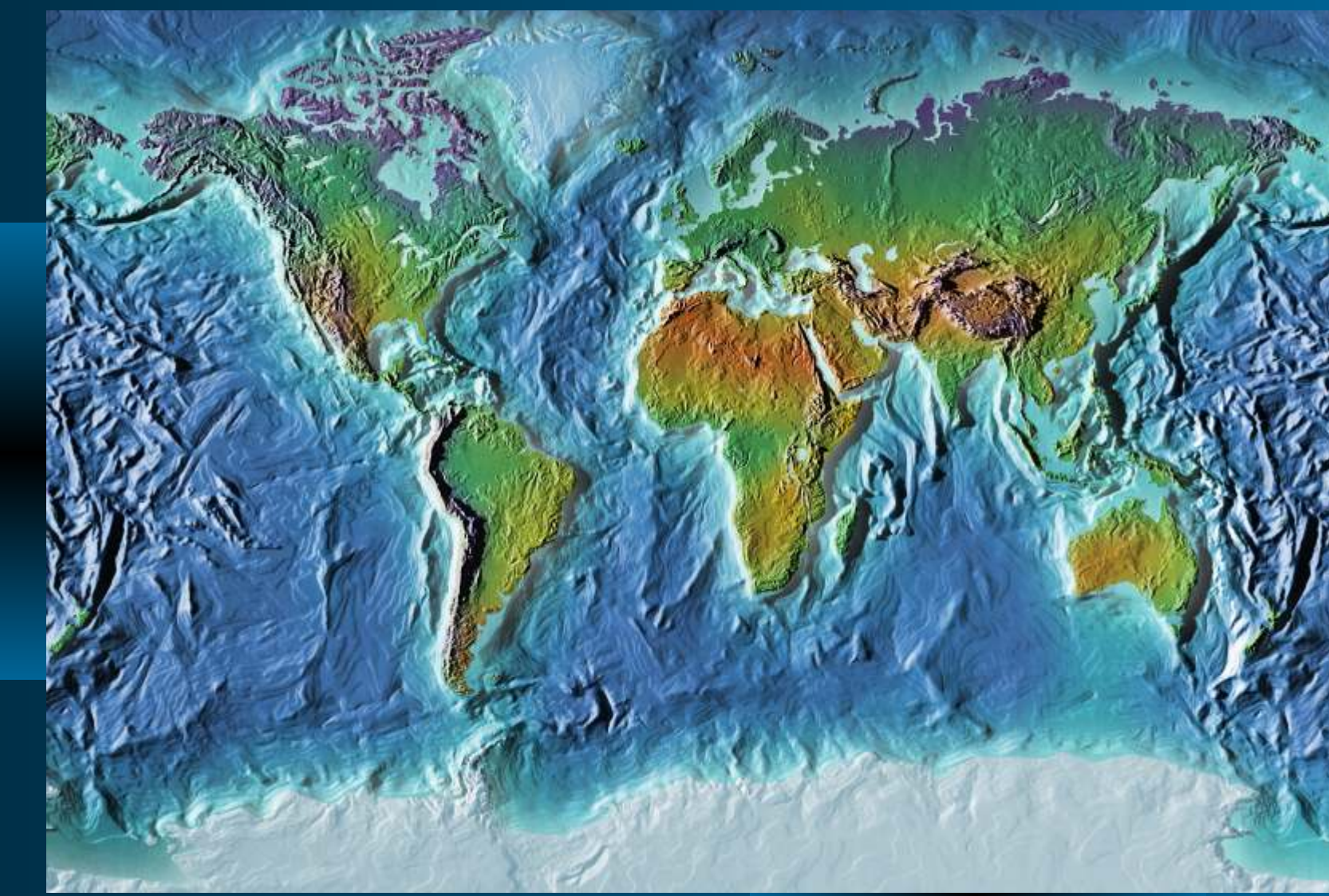
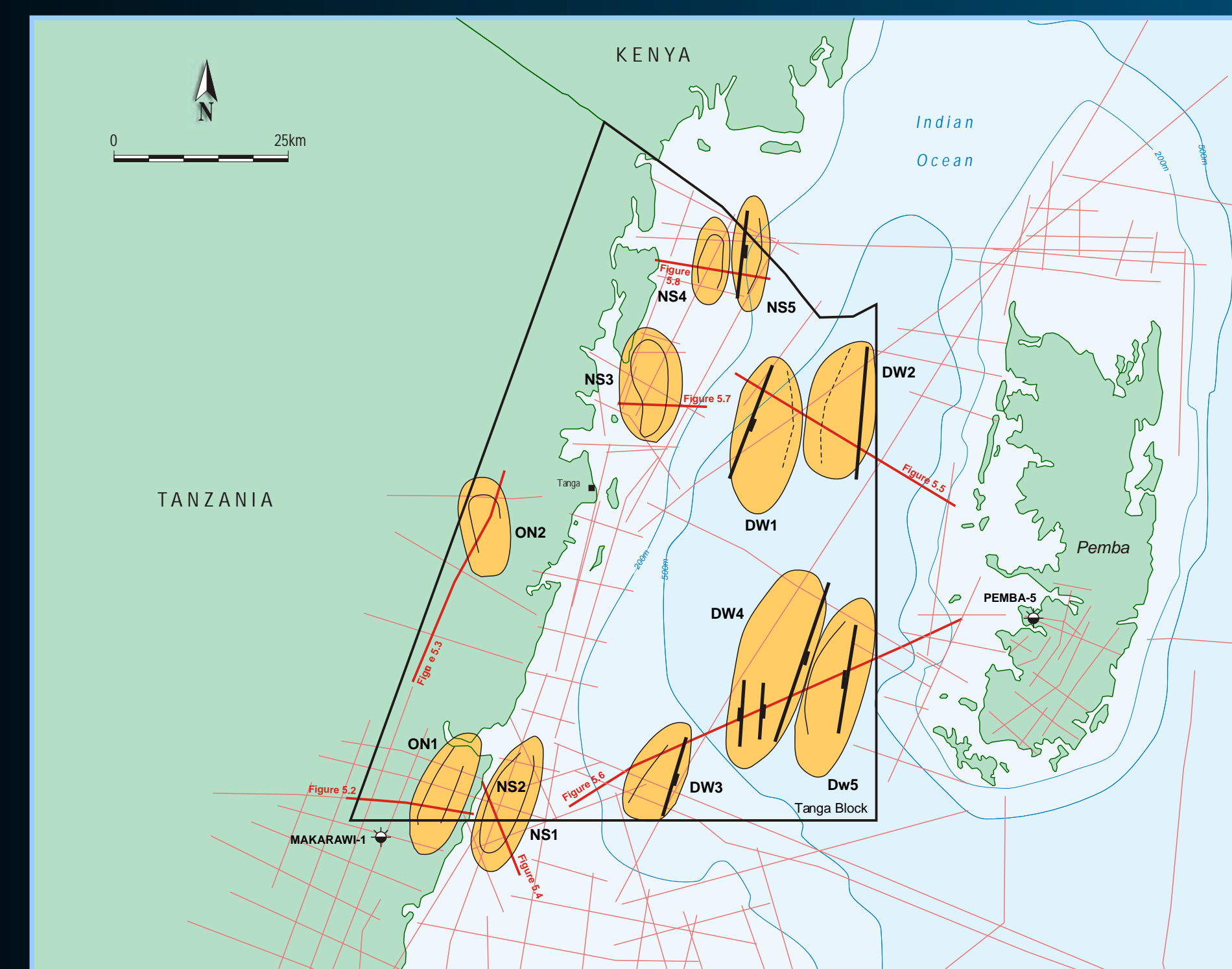


Tanga Block, Tanzania



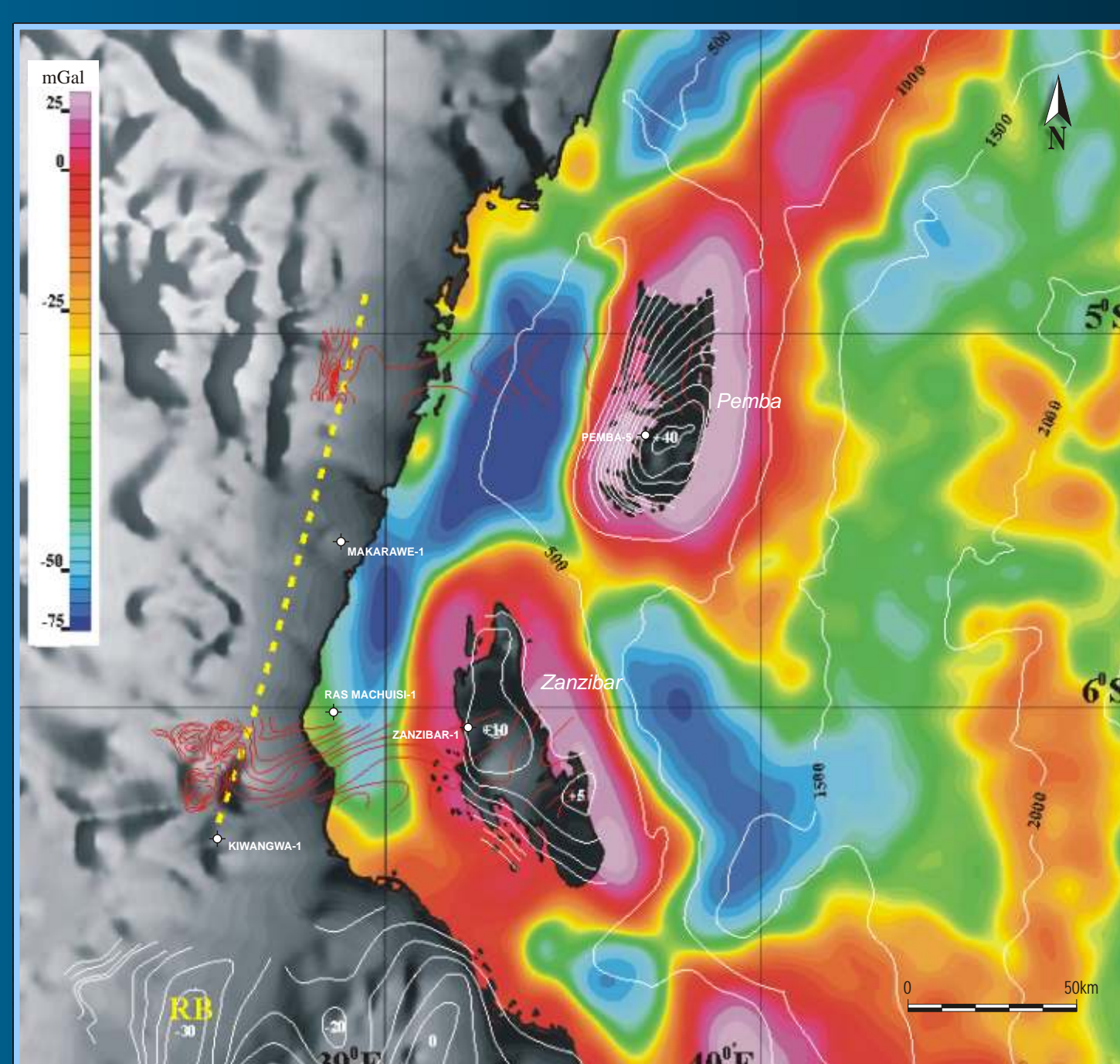
Global Exploration Services Ltd, in association with JEBSCO Seismic (UK) Limited and the Tanzania Petroleum Development Corporation, completed a report, March 2004, on this prospective region.

- Geological overview of Northern Tanzania with special reference to the Tanga Block.
- Potential leads illustrated on existing seismic sections.
- Seismic tied to well data (Ras Machuisi-1).
- Stratigraphy, sequence stratigraphy, revised dates, depositional environments, reservoir and source rock potential.
- Oil analyses (Pemba Tundaua seep and well tarry bitumens) with approx age of source.
- Timing of generation and potential hydrocarbon yields.
- Basin modelling using conventional kinetic (temperature-time) and PresRo[®] (pressure-dependent) models.
- Wells studied are: Makarawe-1, Kiwangwa-1, Pemba-5, Ras Maschuisi-1, Zanzibar-1 and Kimbiji East-1.
- New gravity and radar imagery data presented.

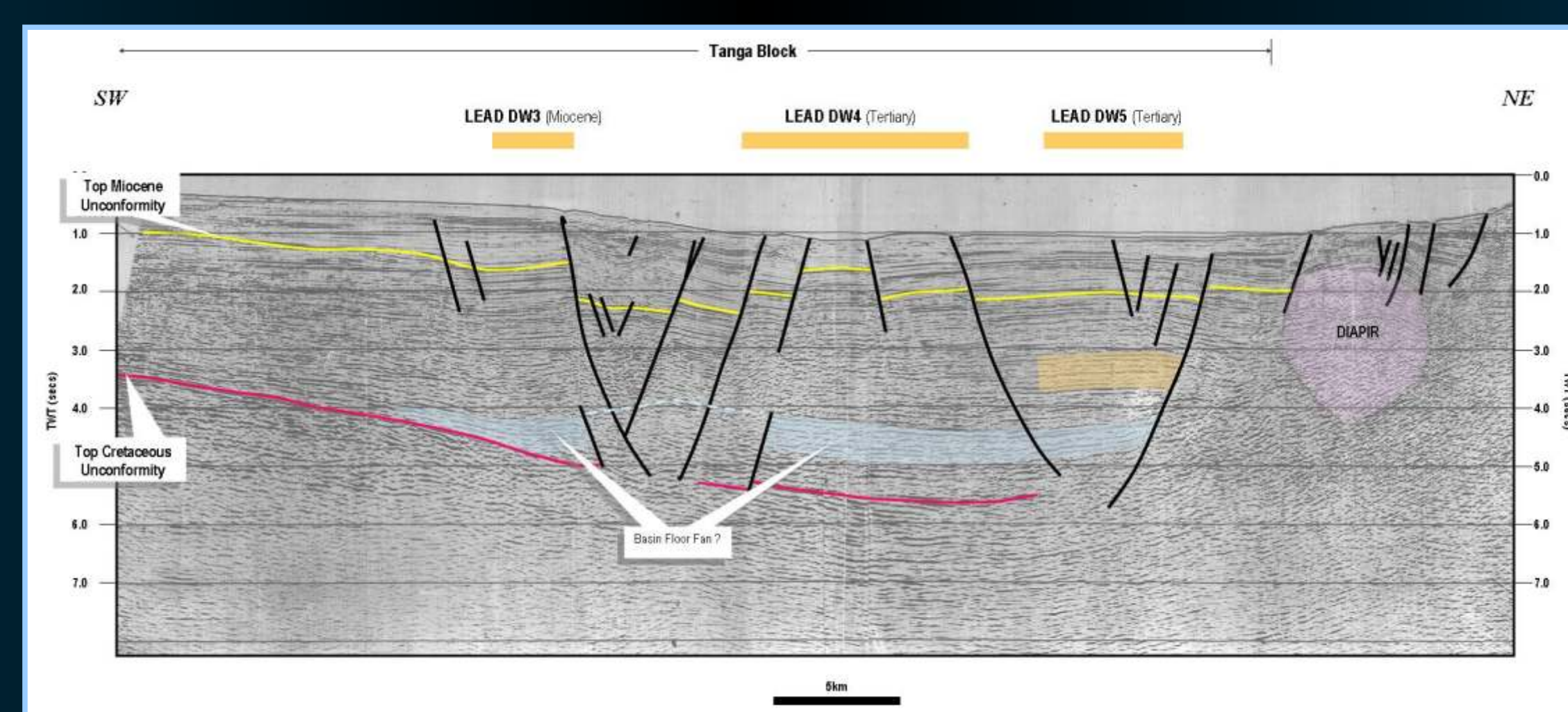


2D SEISMIC COVERAGE / PROSPECTS

The purchase price of report together with group purchase discounts, available on application.



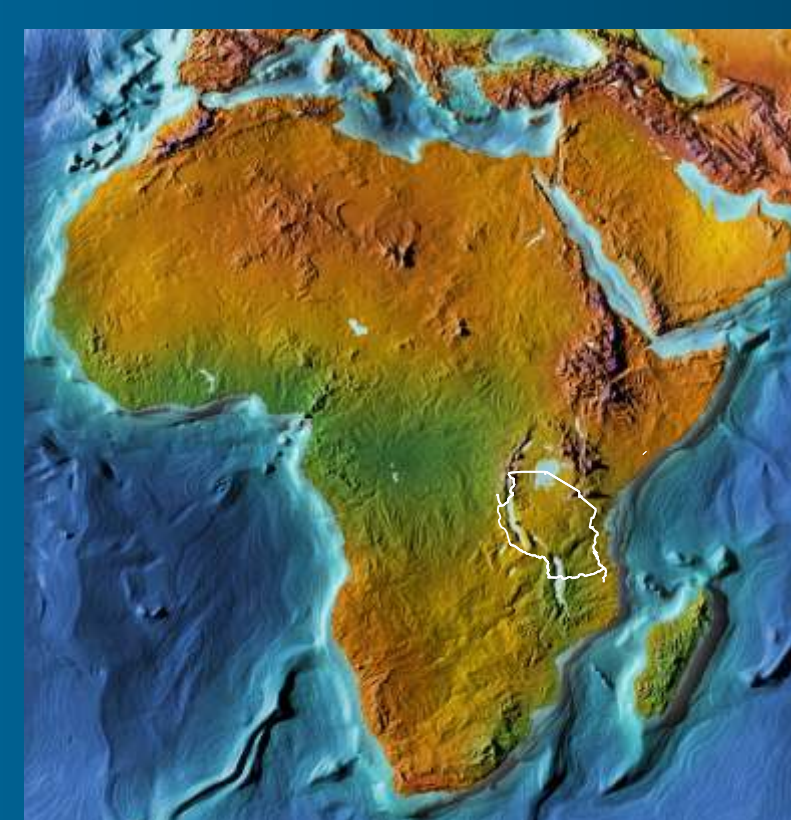
OFFSHORE FREE-AIR GRAVITY



SEISMIC LINE



REGIONAL GEOLOGY



Tanga Block, Tanzania

GLOBAL EXPLORATION SERVICES LIMITED

Cuckfield Road, Ansty, West Sussex RH17 5AL
 Telephone: (44) 1444-459223; Facsimile (44) 1444-452282
 Web Site: www.globalexplor.com

