



The Petroleum Geology and Exploration Potential

of the

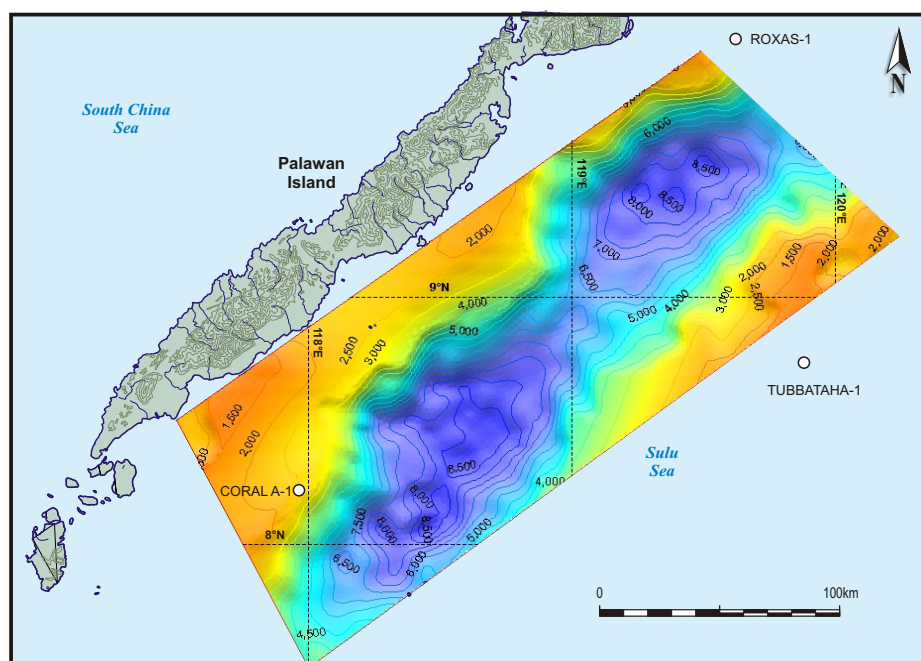


Southern Sulu Sea Basins
Republic of the Philippines



Global Exploration Services Limited, in collaboration with the Philippines Department of Energy, presents a report that demonstrates the potential hydrocarbon prospectivity of the Outer Sulu Sea basins. Also provided are a detailed geological assessment of the basins, a new stratigraphy, and a confirmation of the age and depositional environments of the sediments. Seven key wells provide the essential subsurface data. New gravity data has been obtained to complement the seismic data. From this it has been possible to establish basin geometries and sediment thicknesses east of Palawan Island.

Age		Rock Units / Formations	Lithology	HC Shows	Source	Potent. Res.	Seal
QUAT.	RECENT	Dent Group	Togopi				
	PLEISTOCENE						
PLIOCENE		Dent Group	Gandum Formation				
MIOCENE	LATE						
	MIDDLE	Segama Group	Tungku				
	EARLY		Libong				
OLIGOCENE	LATE	Kinabatangan Group	Ayer				
	EARLY		Tangung				
	EARLY	Labang					
EOCENE	LATE	Kulapis	Crocker Formation				
	EARLY						
	MIDDLE						



Basin modelling of the Outer Sulu Sea basins has been supported by pseudowell data that allows the assessment of the maturity and geographical location of the hydrocarbon kitchens.

This report further provides the essential basic ingredients required to understand the potential hydrocarbon prospectivity existing to the east of Palawan Island.

- * A revision of the stratigraphic succession in both the northern and southern sectors of the Sulu Sea.
- * An interpretation of the depositional packages.
- * Identification of potential source kitchens.
- * Determination of sand body distribution.
- * Determination of carbonate build-ups.
- * Correlation of well sections.
- * Determination of the sequence stratigraphy.

The single copy purchase price of this report is £10,000, with Group discounts of 120%, 140% & 180% available. A digital version is available to purchasers of the report for an additional £1,000.

www.globalexplor.com

For further information, please contact:
Global Exploration Services Ltd.
Cuckfield Road, Ansty, West Sussex RH17 5AL, UK.

Telephone: 44 (0) 1444-459223
Facsimile: 44 (0) 1444-452282
E-mail: sales@globalexplor.com