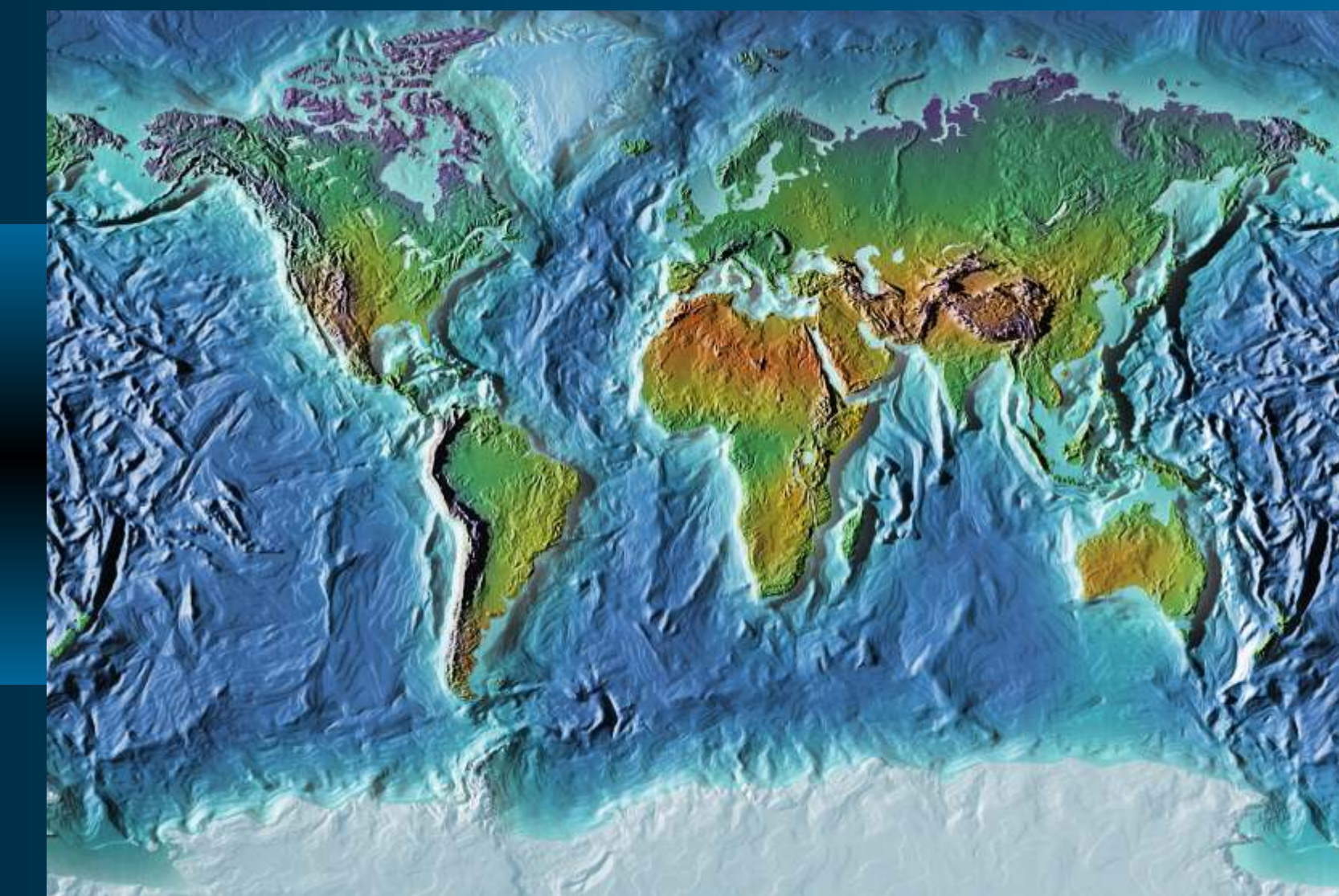


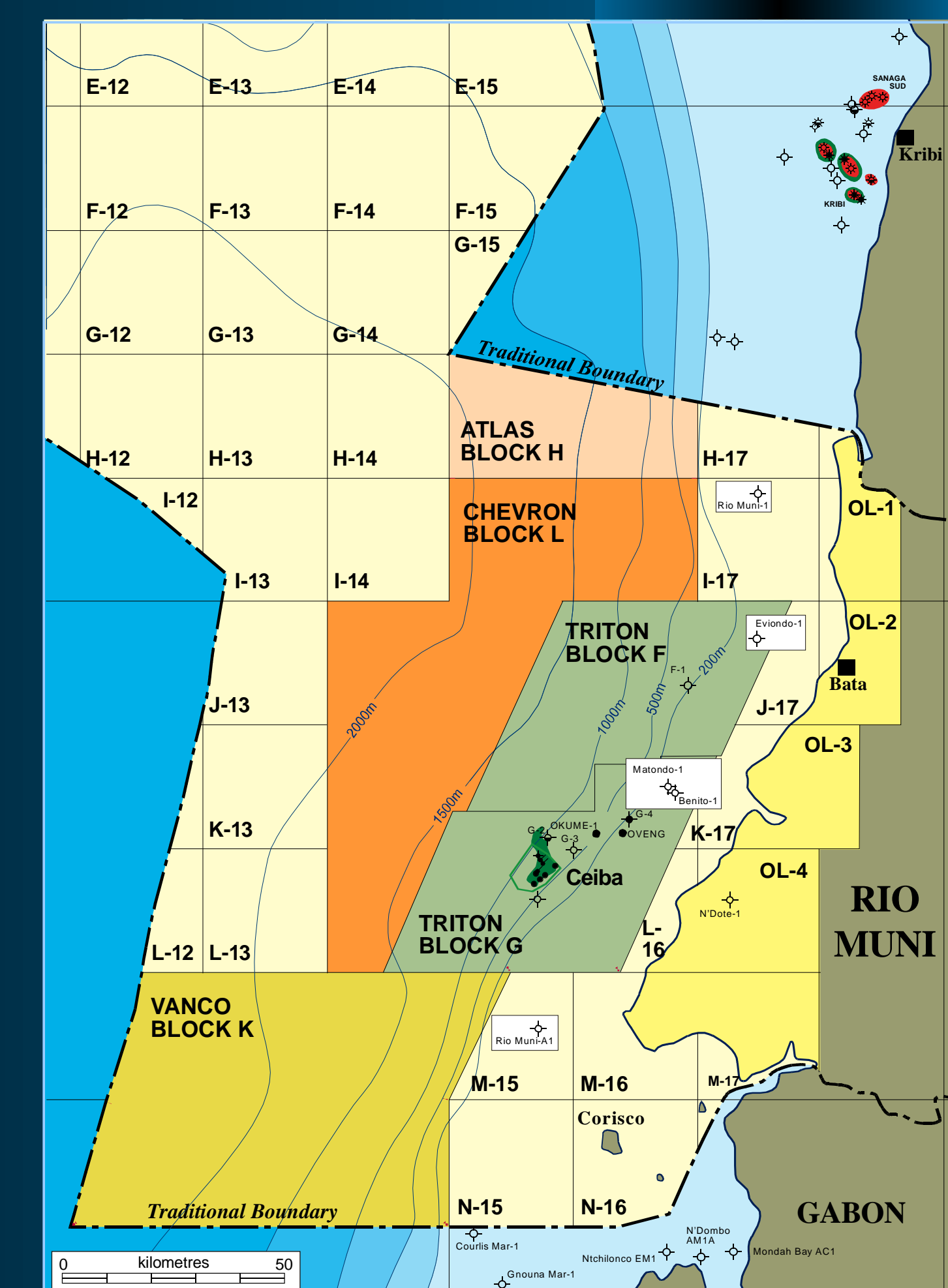
Rio Muni, Equatorial Guinea



Lacustrine Basin Research Ltd, an associated company of Global Exploration Services Ltd, has undertaken a stratigraphic revision of the Rio Muni Basin.

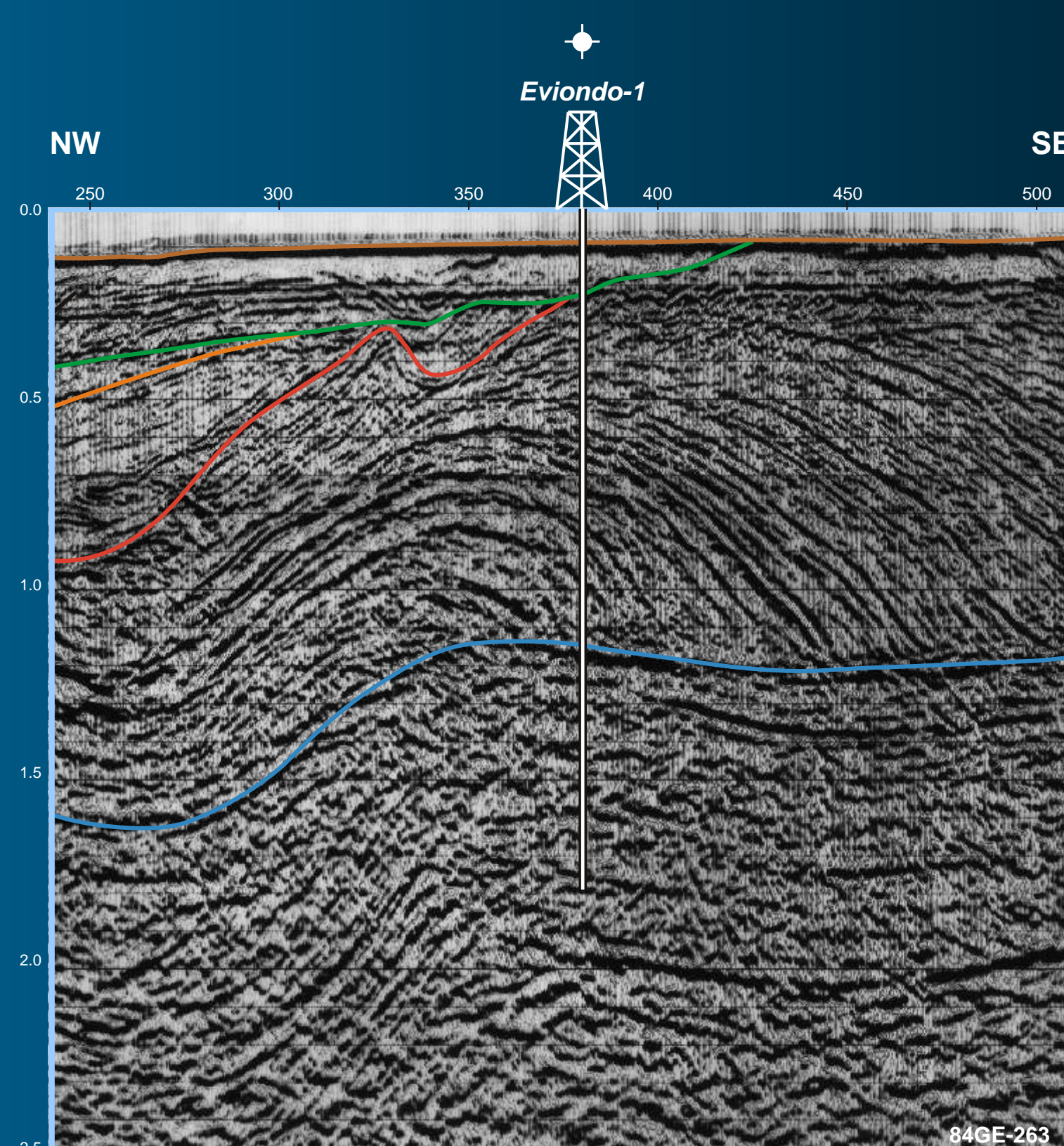
The study is based on a complete re-analysis of samples from the five historical offshore wells. A detailed biostratigraphic examination of the Cretaceous and Tertiary succession has provided more precise data relevant to the timing of sediment deposition, erosion and the significant changes in environments through time. It has been possible to distinguish disconnected Aptian basins and make environmental observations concerning the Aptian Salt

- Provide detailed dating of the sedimentary section.
- Interpret the depositional environments of the Aptian succession.
- Date and interpret the depositional environment of the Aptian Salt.
- Determine phases of anoxia throughout the marine environments to establish horizons where deep-water and shelf anoxia occurred.
- Relate phases of anoxia (source sediment deposition) to periods of shelfal and deepwater sand and carbonate deposition (reservoirs).
- Fully integrated and illustrated report providing revised dating of succession and new environmental interpretations.
- Well summary logs listings ages, biostratigraphic tops, lithostratigraphic and environmental data.
- Well correlation chart and well seismic location figures.
- Faunal and floral species range charts. Comparison of Rio Muni data with that of the Gabon, Sergipe, Alagôas and Araripe Basins.



LOCATION MAP

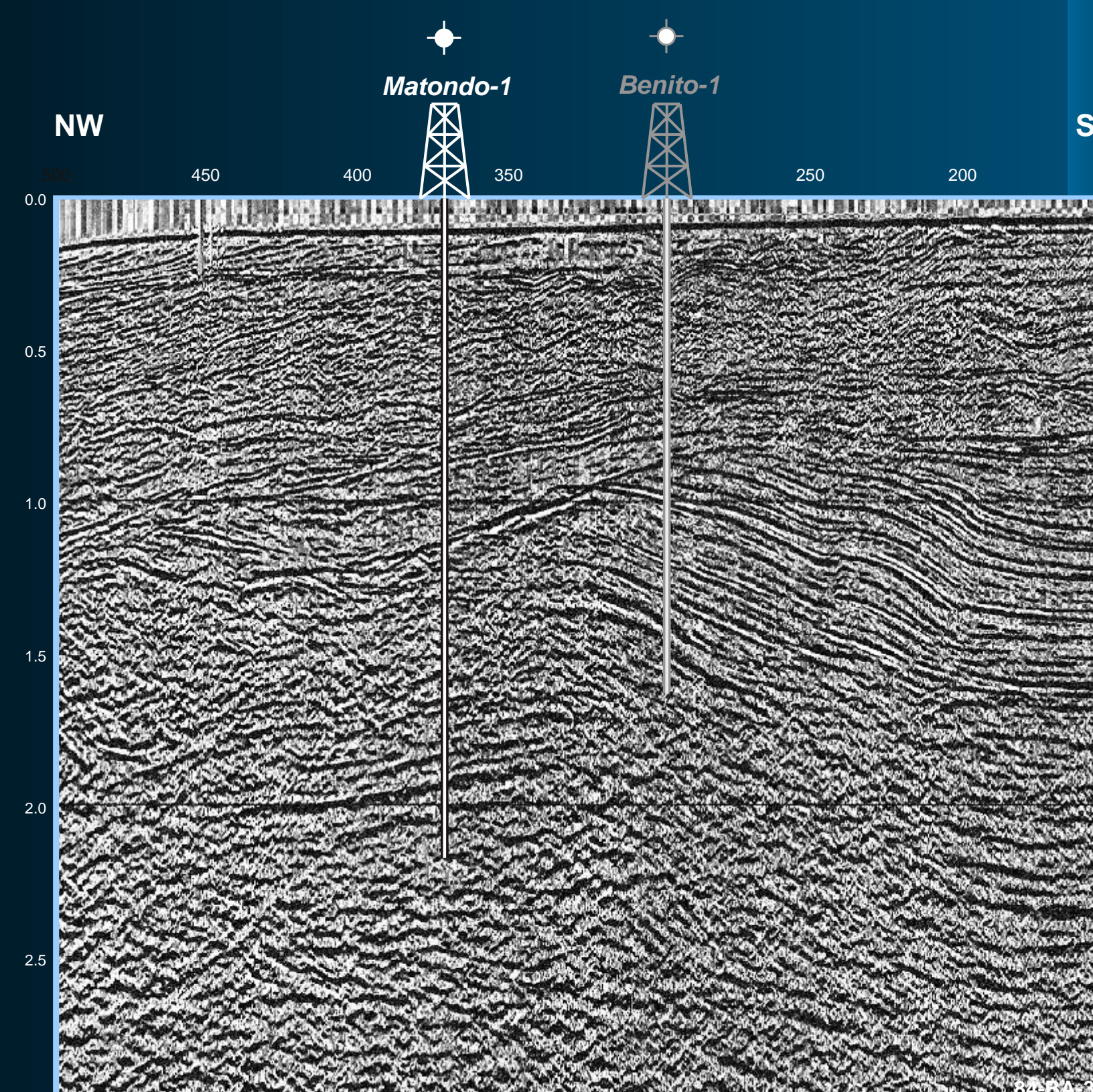
The purchase price of report together with group purchase discounts, available on application.



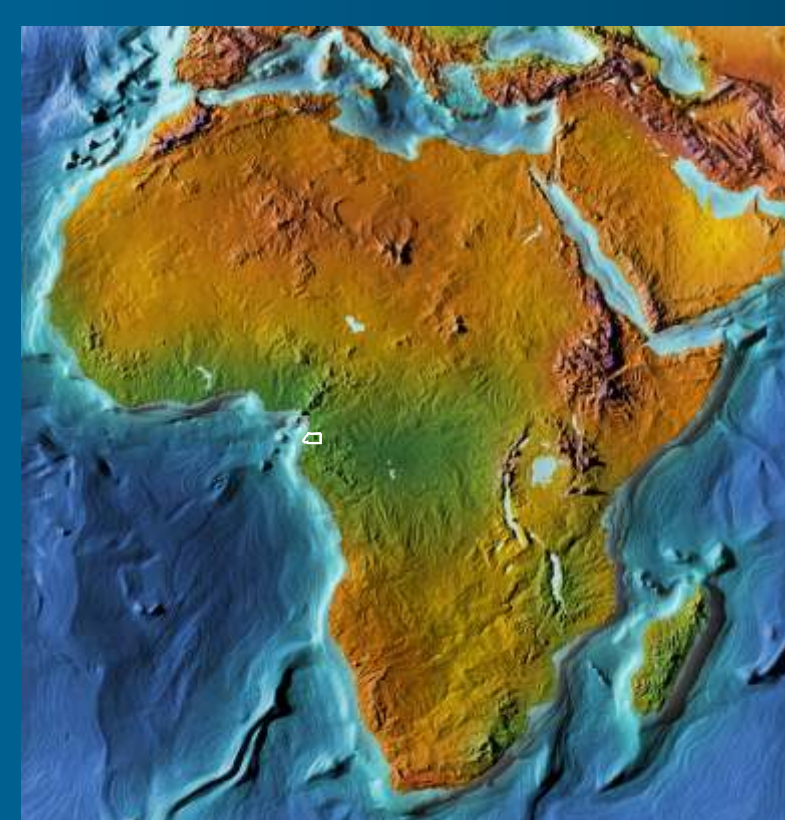
EVIONDO-1



SEISMIC LINE LOCATION MAP



MATONDO-1



GLOBAL EXPLORATION SERVICES LIMITED

Cuckfield Road, Ansty, West Sussex RH17 5AL
 Telephone: (44) 1444-459223; Facsimile (44) 1444-452282
 Web Site: www.globalexplor.com

